

Arush Technocraft
आरुष टेक्नोक्राफ्ट

DESIGNERS, MANUFACTURERS & ERECTORS OF

**PRE-ENGINEERED
BUILDINGS (PEB)**




ABOUT COMPANY



Established in the year 2007, **Arush Technocraft** is the fastest growing Pre-engineered Buildings (PEB) Company.

We have immense pleasure in introducing ourselves as Designers, Fabricators, and erectors of Steel Structures, Pre-engineered Buildings and custom fabrication jobs including heavy and light gauge steel fabrication.

Under the valuable guidance of our mentor, **Er.Arush Jain (Structural Engineer)**, we are growing with a notable rate in the market. He has spent long years in the industry to have rich industrial experience enabling us to understand the varied requirements of our clients.





OUR VISION

We envision becoming a leading force in the design, fabrication, and erection of steel structures. Our focus on delivering superior quality, adhering to strict timelines, and ensuring customer satisfaction defines our commitment.

Our vision extends beyond just structures; we see ourselves as catalysts for logistical evolution. Through strategic partnerships and a customer-centric approach, we envision becoming the trusted choice for those seeking unparalleled quality and functionality in warehouse solutions.

WHY US?

We have vast experience of undertaking different kind of manufacturing of intricate structures.

We have a team of profound engineers, artisans and workers, T & P and resources to undertake any kind of steel fabricated products.

Our State of the Art Manufacturing facility is spread over 65000 SQ.FT in Jabalpur, M.P.



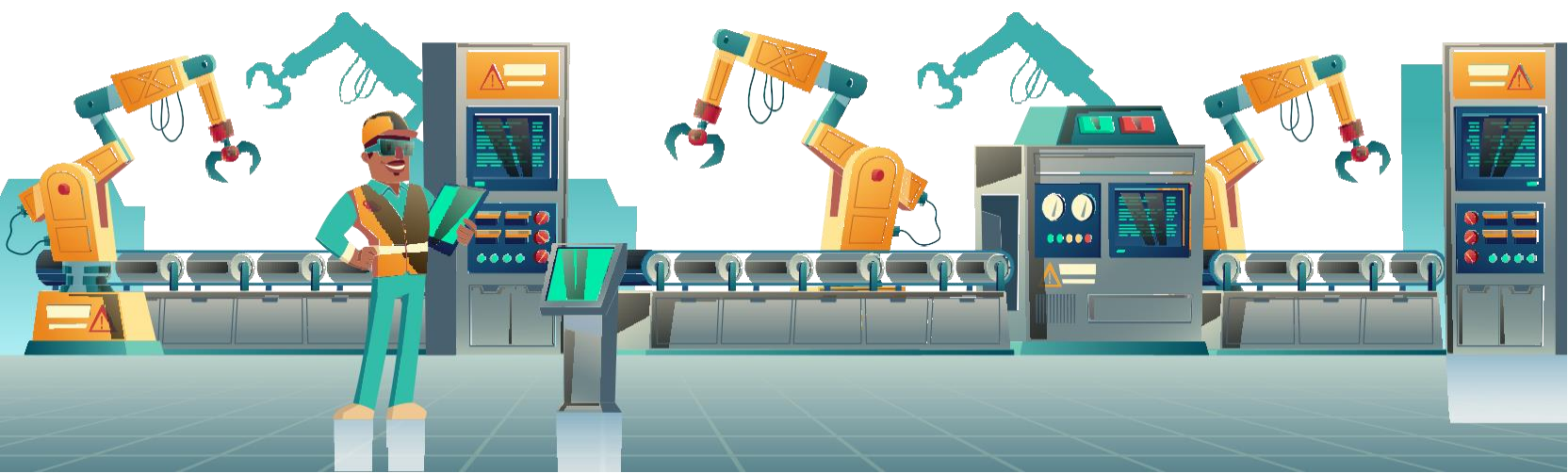
OUR CAPACITY:

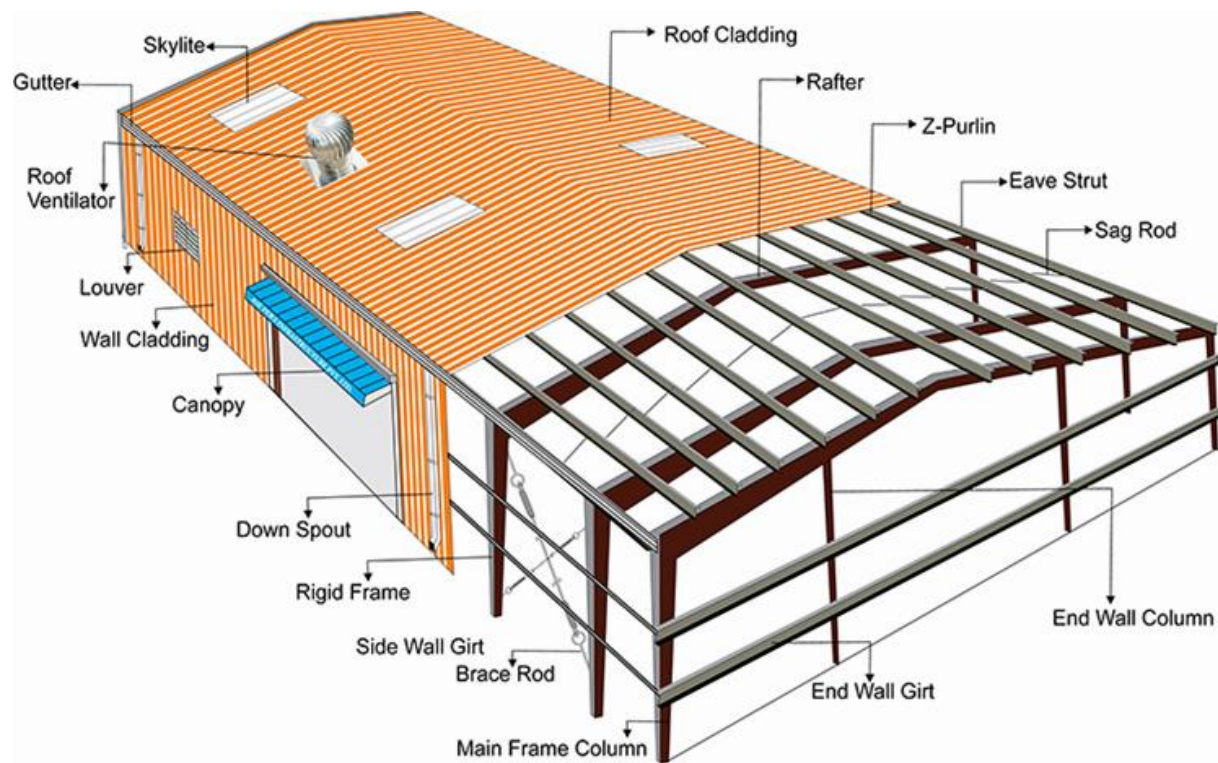
- Pre Engineered Buildings - 2400 M.T per year.
- Tubular Structures- 600 M.T per year.
- Other Technical Fabrications- 800 to 1000 M.T per year
(Depending on the type of fabrication)
- POL Tank fabrication- 200 tanks per year.



MAJOR MACHINES IN OUR FACTORY:

- CNC Plasma cutting (P 25mm, Oxy-fuel P 100 mm,
Bed Size- 3 M X 12.5M)
- SAW Welding - 1250 Amps
- All kinds of Fabrication machines
- MAJOR MACHINES EOT Cranes and Mobile Cranes
- MIG welding sets
- Hydraulic presses



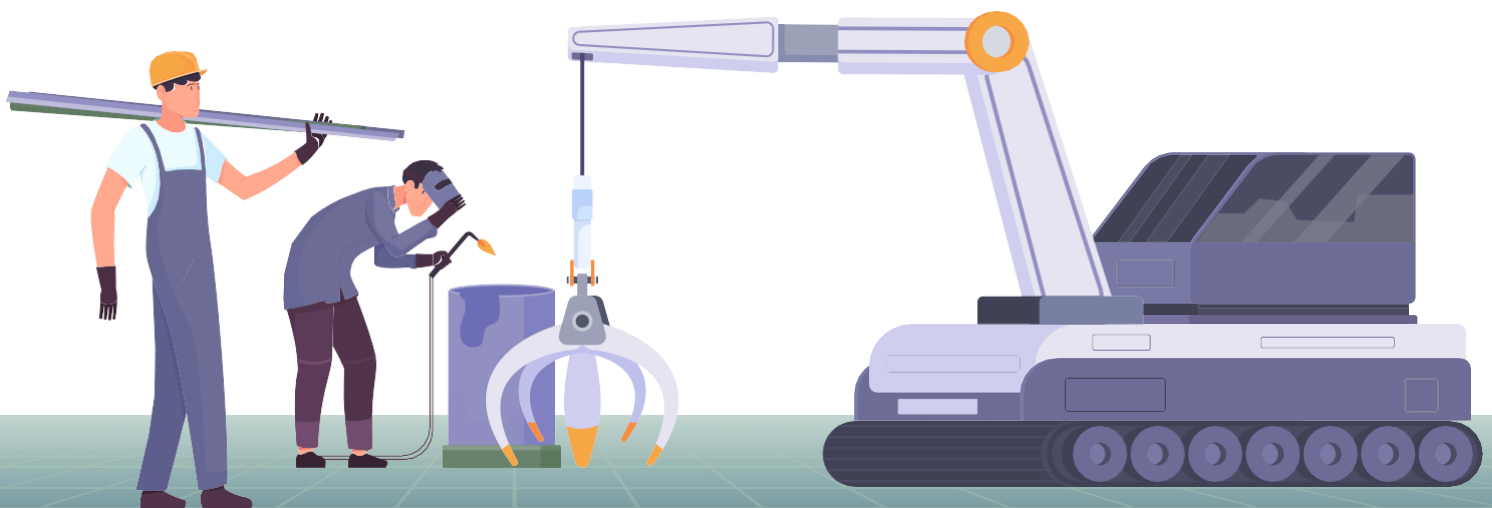


A pre-engineered building (PEB) is a type of building that is designed and fabricated using standardized and pre-fabricated components. These components are manufactured offsite and assembled on-site, allowing for a quick and efficient construction process. The design and engineering of PEBs are done beforehand, usually by a team of architects, engineers, and designers. The components are manufactured in a factory under controlled conditions, ensuring high quality and consistency. The components are then transported to the construction site, where they are assembled using bolts and screws. They are typically less expensive and quicker to construct, as the components are pre-fabricated and require less on-site labor. There are three major components in P.E.B:

Primary structure,

Secondary structure,

Sheeting/Accessories.



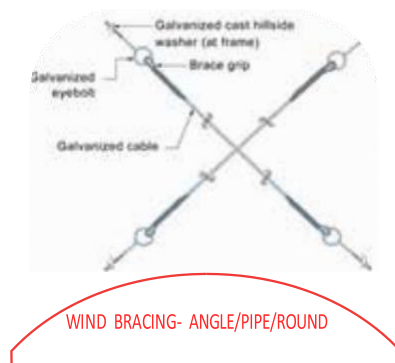
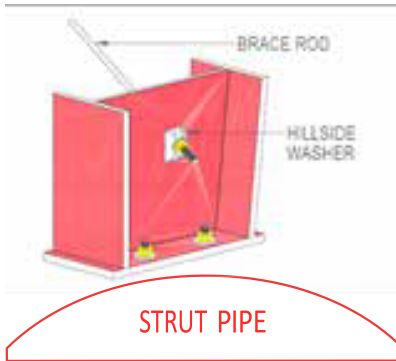
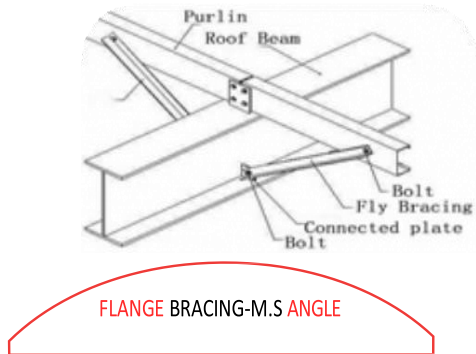
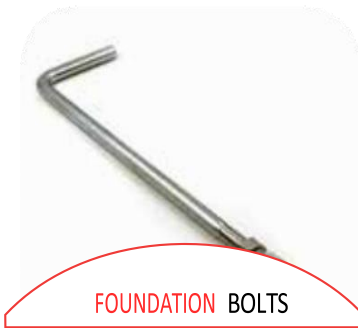
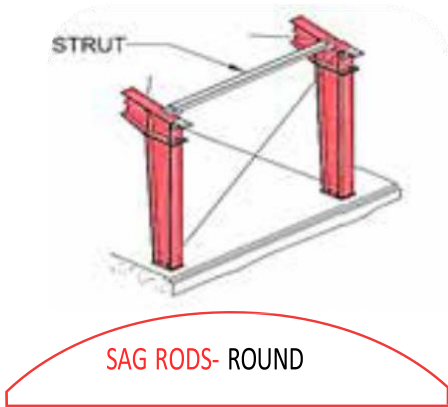
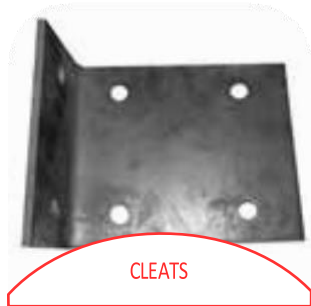
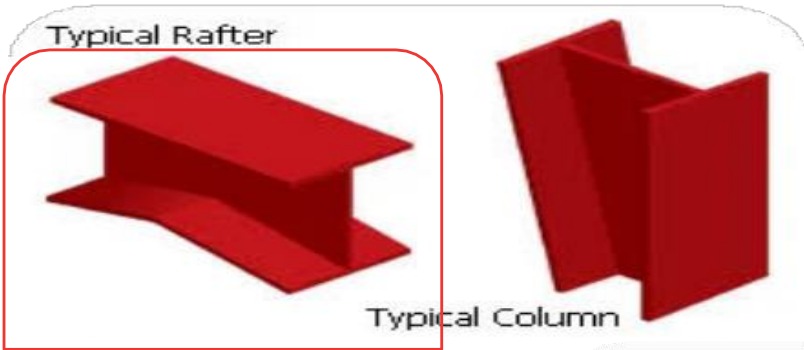


VARIOUS APPLICATIONS OF PEB:

- Ware houses
- Cold Storages
- Factories
- Industrial Buildings
- Showrooms
- Workshops
- Super Markets
- Shopping Malls
- Sports Stadium
- Auditorium
- Function Halls
- Community Buildings
- Petrol Pump
- Car Parking
- Airport Hangers
- Metro Stations
- Shelters
- Sheds
- Schools
- Colleges
- Hospitals
- Office Buildings
- Shipyards
- Ports



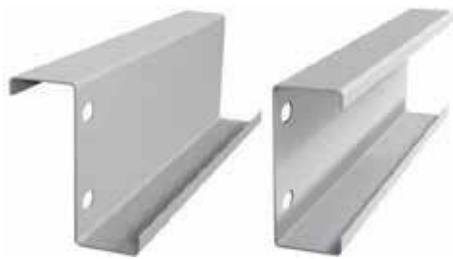
PRIMARY STRUCTURE (Rafter & Columns) ,SAG RODS, CLEATS,



SECONDARY STRUCTURE

Z/C purlins are horizontal beams that are designed to form the roof and wall joists of a building shell structure.

They sit between the roofing sheets and the primary structure acting as a support for the sheet to ensure that the loads are distributed efficiently and the sheets are kept intact in their position.



Z/C PURLIN



TURBO VENT

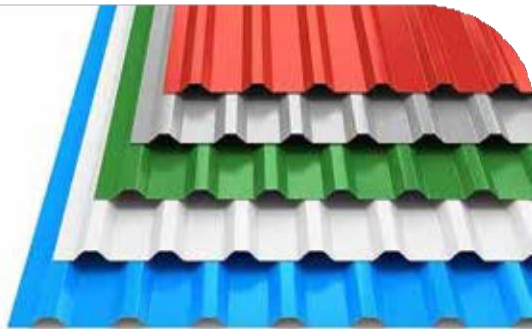


SKYLIGHTS



ROOF & SIDE SHEETING

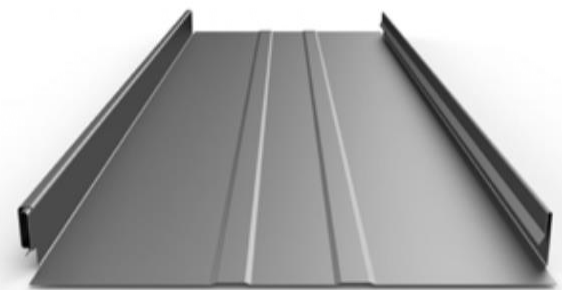
ARUSH TECHNOCRAFT
PPGI/PPGL SHEETS (0.32-1.6MM)



PPGI/PPGL sheets of various colours and Paint System, RMP, SMP, SDP & PVDF. Top Side, Primer paint + polyester paint coating (25 microns) min.

STANDING SEAM
SHEETS (0.4-0.85MM)

Standing Seam gives Outstanding Aesthetic Look, Leak Proof, and Decorative Design & Weather Tight Roof in all condition.



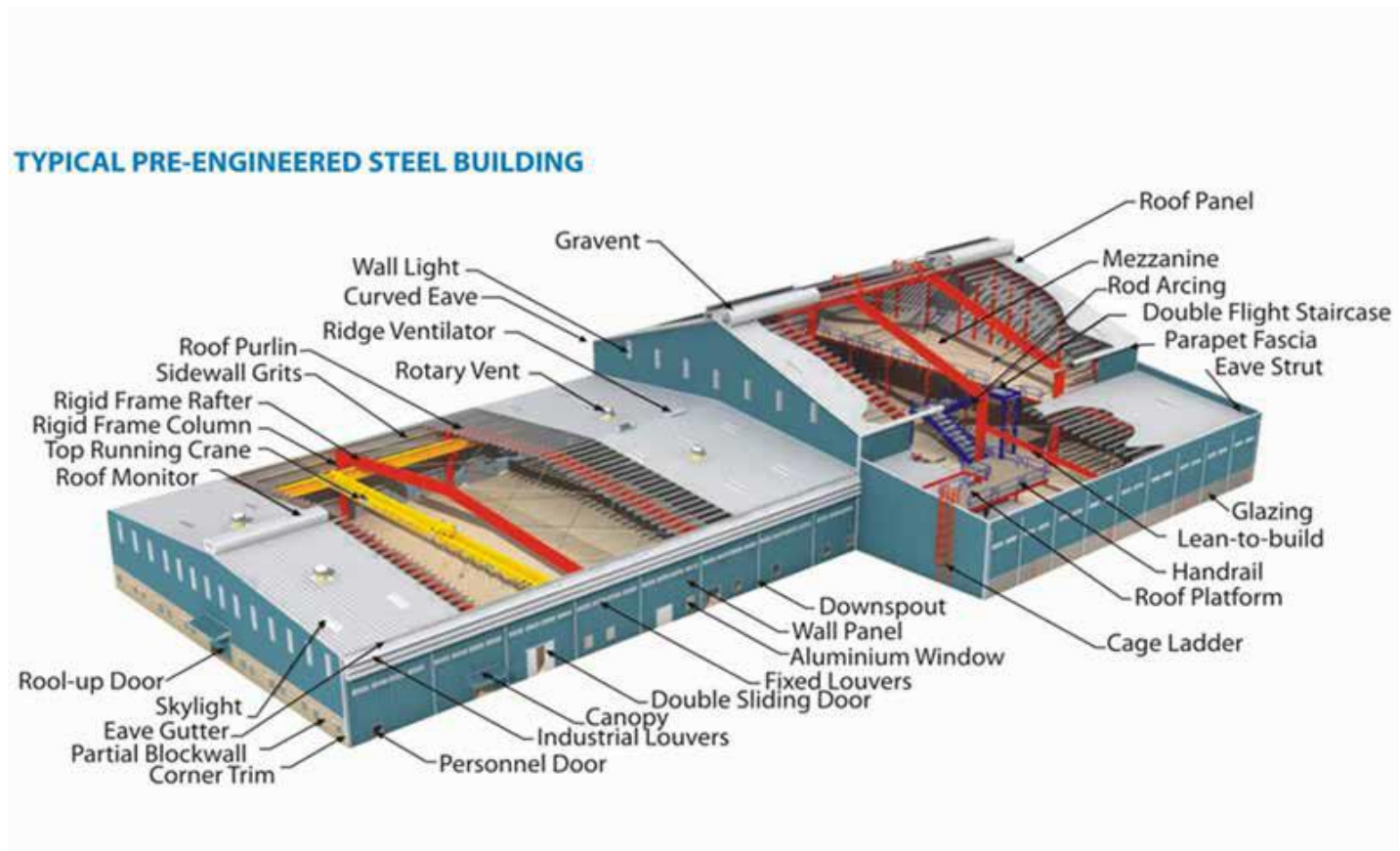
LINER SHEET PANELS



Liner Profile is an attractive, fitted on wall & ceiling cladding for exterior and interior use, on straight or curved surfaces.



ILLUSTRATION OF COMPONENTS IN P.E.B STRUCTURE

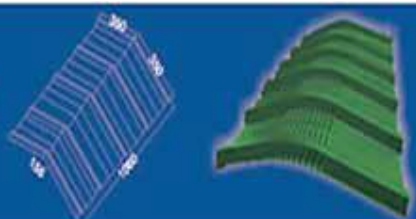


FEW OF THE MAJOR COMPONENTS OF P.E.B STRUCTURE

- Main framing with vertical columns
- End wall framing
- Purlins, girts and eave struts
- Sheeting and insulation
- Crane system
- Mezzanine system
- Ventilation system
- Drainage system

ACCESSORIES

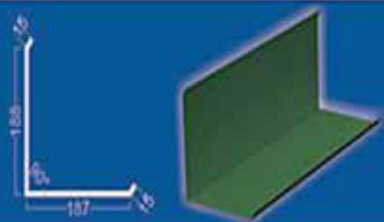
Profiled Ridge
(RD 1020)



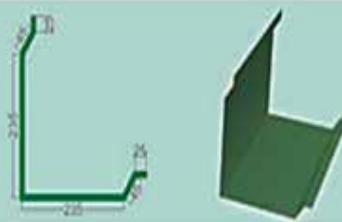
Plain Ridge
(RD 610)



Corner Flashing
(CF 405)



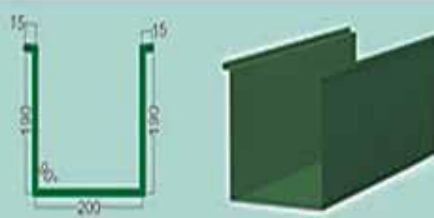
Profiled Corner Flashing
(CF 610)



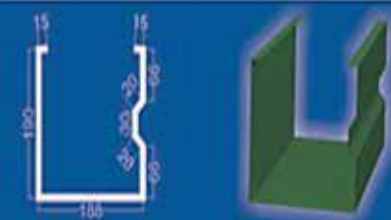
Profiled Gable Flashing
(PGF 610)



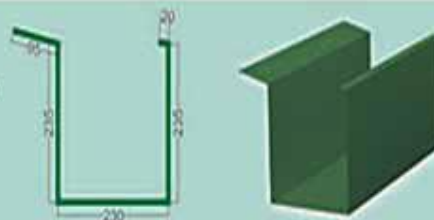
Box Gutter
(BG 610)



Profiled Box Gutter
(PBG 610)



Eave Gutter
(EG 815)



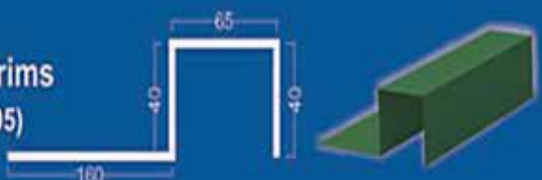
Profiled Eave Gutter
(PEG 815)



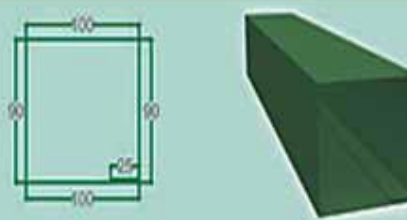
Valley Gutter
(VG 815)



Deep Trims
(DT 305)



Down Take Pipe
(DTP 405)



INSULATIONS



STONEWOOL INSULATION

Specially treated stone wool has optimal insulative and acoustic properties, this ensures buildings are always maintaining comfortable temperatures and sound for the occupants.



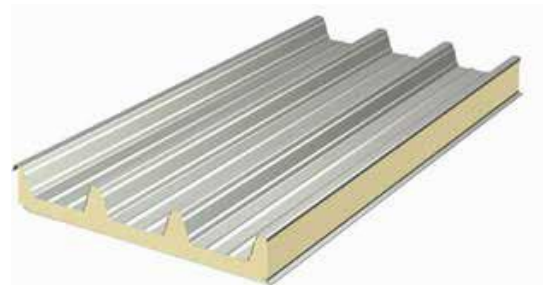
GLASS WOOL INSULATION

It is light, is proof against fire and dampness, chemicals, rodents, etc., will stand high temperatures, will not decay or deteriorate with use and has low specific heat property.



AIR BUBBLE INSULATION

Reflective air bubble insulation reflects 97% of heat and keeps the inner atmosphere at stable temperature. It is cost effective and easy to fix between sheets and structure.



STONEWOOL INSULATION

PUF panels are Polyurethane Foam which is a layer of material sandwiched between two GI metal sheets. The foaming material ensures proper insulation from heat as well as cold, maintaining the room temperature inside and also providing fire resistance to the building.

LIST OF MACHINERIES

SECTOR	PARTICULARS	CAPACITY	NO.
MATERIAL HANDLING	EOT CRANES	5 MT	2
	EOT CRANE	2 MT	1
	MOBILE CRANE	9 MT	1
FABRICATIONS	POWER PRESS (PUNCHING, CROPPING ETC.)	100 MT	1
	MULTI STATION POWER PRESS	150 MT	1
	MULTI STATION POWER PRESS	50 MT	1
	ANGLE CROPPING M/C	130 MT	2
	POWER PRESSES	30-50 MT	6
	NOTCHING M/C	10 MT	1
	HACK SAW	600 MM	1
	DOUBLE COLUMN BEND SAW	300 MM	1
	BEND SAW	200 MM	1
	RADIAL DRILLS	32 MM	3
	THREADING M/C	75 MM DIA.	1
	END FACING M/C	150 MM DIA.	1
	MAGNETIC DRILL	32 MM	2
	BROACH CUTTER	50 MM/40 MM DIA.	1
	PLATE BENDING M/C 1.5 MTR.	10 MM	1
	AIR COMPRESSORS	LS	4
WELDING	SAW WELDER (12 MTR. LONG BED)	1250 AMPS	1
	SAW WELDER	400 AMPS	5
	WELDING M/C (INVERTOR BASED)	MISC	4
	GAS PROFILE CUTTING M/C	1.25 MTR. ARM	1
	GAS WELDING		4

SECTOR	PARTICULARS	CAPACITY	NO.
MISC. M/CS.	PUG CUTTING		4
	TABLE GRINDERS		2
	ELECTRODES OVENS		1
	PORTABLE CHIPPERS GRINDERS CUTTERS,DRILLS PNEUMATIC CHIPPERS ETC		LS
WORKSHOP	LATHE	4, 6, 12 FEET	3
	SHAPER	130 MT	1
	MILLING	750 MM	1
INSTRUMENTATION	VERNIER CALIPERS	150 TO 600 MM	5
	DIAL GAUGE	25 MM	1
	WELD GAUGES SET		1
	MEASURING SCALES AND TAPES		LS
	FEELEERS GAUGES SET		LS
	THREAD GAUGES		1

SOME OF OUR PRESTIGIOUS CLIENTS:

- PRISM CEMENT, CENTURY CEMENT, & MANIKGARH CEMENT , MAIHAR CEMENT
- INDIAN RAILWAYS
- COMMERCIAL ENGINEERS & BODY BUILDERS CO (CEBBCO)
- KEC INTERNATIONAL LTD.
- RAS POLYPACK PVT LTD, MANERI
- PACIFIC IRON ORE MANUFATURING PVT LTD, PARAKHEDA
- INDIAN OIL CORPORATION LTD.
- TREELY AGRO PANELS PVT LTD, NARSINGHPUR
- PRAKRITI NONWOVENS PVT LTD, PITHAMPUR, INDORE
- SML SHOWROOM AT JABALPUR
- MAHALAXMI WAREHOUSE & LOGISTICS, BHOPAL
- SADHANA POLYPACK PVT LTD, RICHHAI, JABALPUR
- 25000 MT OF BOT PROJECT AT MANDLA
- WHITE GRAINS RICE MILL AT MANERI INDUSTRIAL AREA.
- CITY STADIUM, SAGAR SMART CITY PROJECT.
- JNKVV AUDITORIUM
- FARZI CAFÉ, JABALPUR
- JNKVV AUDITORIUM
- SATNA EXHIBITION CENTRE
- 150+ COMPLETED PROJECTS FOR PRIVATE WAREHOUSES
- 50+ COMPLETED PROJECTS FOR INDUSTRIAL SHEDS.

OUR BUSINESS ASSOCIATES:

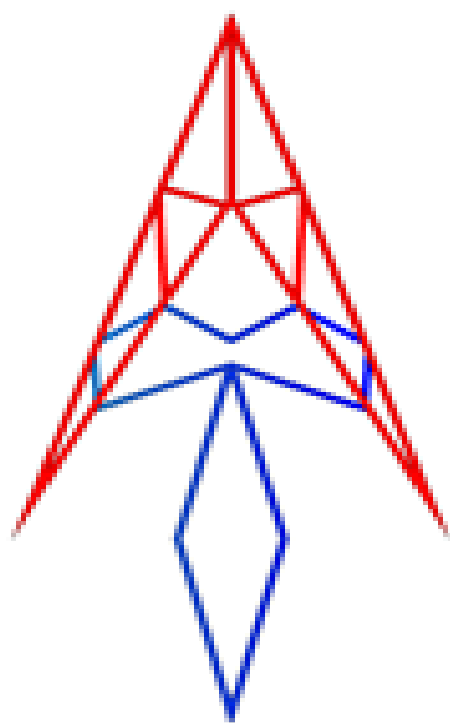
Authorised Manufacturer of Kamdhenu PEB under
licence User Agreement

KAMDHENU STEEL



KAMDHENU BUILDTech PRIVATE LIMITED





ER. ARUSH JAIN (PROPRIETOR)

88396-24548

For Enquiries : 9516618163
Email : arushtecnocraft@gmail.com
Website : www.arushtecnocraft.COM

FACTORY ADDRESS – PLOT 14-A, INDUSTRIAL AREA,
RICHHAI, JABALPUR, MADHYA
PRADESH, 482010